

# WINTER **VACATION CARE PROGRAM**

27 June – 19 July 2022



# MONDAY 27/06/2022

## WINTER WONDERLAND

TIME	DESCRIPTION
7.00am	Children arrive: Indoor investigative play Quiet activities
8.00am	Team building and group games Sensory play
9.00am	Group discussion and news
9.30am	Group fitness
10.00am	Morning tea: fruit platter and rice cakes Playground activities
11.00am	<b>Arts and Craft:</b> Pre-Kindy – Pre-Primary Beaded snowflakes Year 1 – Year 2 Winter theme slime Year 3+ Fake snow making <b>Cooking:</b> Rice crispy treats
12.30pm	Lunch time
1.00pm	Quiet time with mindful meditation and story time
1.30pm	Free time

TIME	DESCRIPTION
2.00pm	<b>Group activities</b> Winter themed group games rotation! <ul style="list-style-type: none"><li>• Dress the snowman</li><li>• Snowball "rob the nest"</li><li>• Penguin shuffle race</li><li>• Marshmallow stack</li></ul>
3.00pm	Afternoon tea: fruit platter and rice crispy treats
4.00pm	Outdoor investigative play
5.00pm	Reflection/suggestion time Quiet activities
6.00pm	Children depart



# TUESDAY 28/06/2022

## ECO EXPLORERS (REMIDA INCURSION)

TIME	DESCRIPTION
7.00am	Children arrive: Indoor investigative play Quiet activities
8.00am	Team building and group games Sensory play
9.00am	Group discussion and news
9.30am	Group fitness
10.00am	Morning tea: fruit platter and biscuits Playground activities
11.00am	<b>Arts and Craft:</b> STEM activities Pre-Kindy – Pre-Primary Paper towel rainbow Year 1 – Year 2 Milk carton rockets Year 3+ Egg drop containers & test
12.30pm	<b>Cooking:</b> Cheese quesadillas Lunch time

TIME	DESCRIPTION
1.00pm	Quiet time with mindful meditation and story time
1.30pm	Free time
2.00pm	<b>REmida incursion</b> <ul style="list-style-type: none"><li>• Building cities from recycled materials</li></ul>
3.00pm	Afternoon tea: fruit platter and cheese quesadillas
4.00pm	Outdoor investigative play
5.00pm	Reflection/suggestion time Quiet activities
6.00pm	Children depart

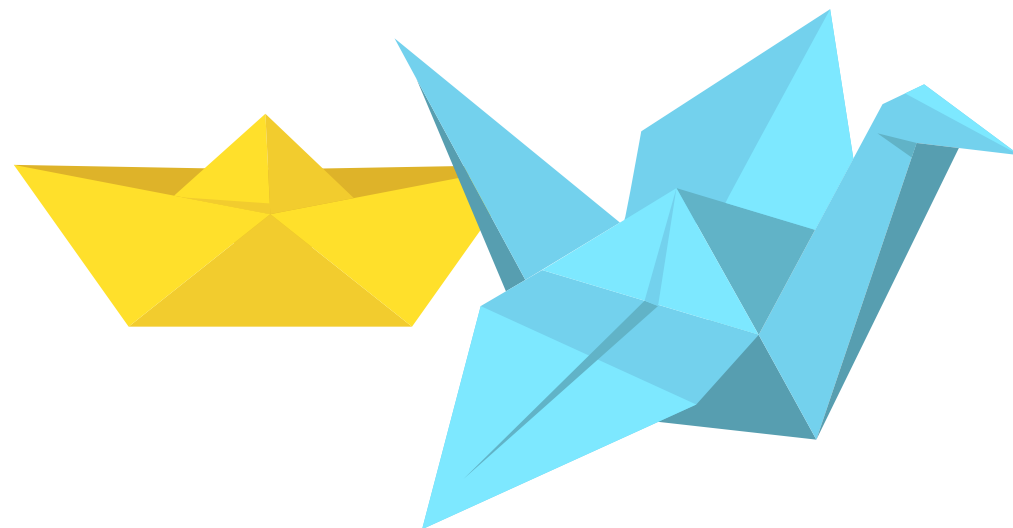


# WEDNESDAY 29/06/2022

## AROUND THE WORLD: JAPAN

TIME	DESCRIPTION
7.00am	Children arrive: Indoor investigative play Quiet activities
8.00am	Team building and group games Sensory play
9.00am	Group discussion and news
9.30am	Group fitness
10.00am	Morning tea: fruit platter and cheese & crackers Playground activities
11.00am	<b>Arts and Craft:</b> Pre-Kindy – Pre-Primary Animal origami (dogs, fish and frogs) Year 1 – Year 2 Box origami Year 3+ Origami crowns All Origami fortune tellers
12.30pm	<b>Cooking:</b> Sushi making Lunch time

TIME	DESCRIPTION
1.00pm	Quiet time with mindful meditation and story time
1.30pm	Free time
2.00pm	<b>Group activities rotation:</b> <ul style="list-style-type: none"><li>• Janken (rock, paper, scissors continuous tag)</li><li>• Super ball Sukui (super ball scooping)</li><li>• Yo-yo Tsuru (water balloon fishing)</li></ul> Afternoon tea: fruit platter and sushi
3.00pm	Outdoor investigative play
4.00pm	Reflection/suggestion time
5.00pm	Quiet activities
6.00pm	Children depart



# THURSDAY 30/06/2022

## TINY TOURISTS

TIME	DESCRIPTION
7.00am	Children arrive: Indoor investigative play Quiet activities
8.00am	Team building and group games Sensory play
9.00am	Group discussion and news
9.30am	Group fitness
10.00am	Morning tea: fruit platter and chips & salsa Playground activities
11.00am	<b>Arts and Craft:</b> Pre-Kindy – Pre-Primary DIY passports Year 1 – Year 2 Paper airplane competition Year 3+ Dream holiday dioramas
	<b>Cooking:</b> Vegetable pizza
12.30pm	Lunch time
1.00pm	Quiet time with mindful meditation and story time

TIME	DESCRIPTION
------	-------------

1.30pm	Free time
2.00pm	<b>Group activity:</b> Around the world scavenger hunt <ul style="list-style-type: none"><li>Cities around the world have had their main attractions stolen! Help find and return them to their city before the plane of tourists arrive!</li></ul>
3.00pm	Afternoon tea: fruit platter and pizza
4.00pm	Outdoor investigative play
5.00pm	Reflection/suggestion time Quiet activities
6.00pm	Children depart



# FRIDAY 01/07/2022

## MOVIE THEME MADNESS

Come in your most cozy pyjamas!

TIME	DESCRIPTION
7.00am	Children arrive: Indoor investigative play Quiet activities
8.00am	Team building and group games Sensory play
9.00am	Group discussion and news
9.30am	Group fitness
10.00am	Morning tea: fruit platter and mini sandwiches Playground activities
11.00am	<b>Arts and Craft:</b> All                      Make a popcorn box for the afternoon Create your own DVD case
12.30pm	<b>Cooking:</b> Pikelets Lunch time

TIME	DESCRIPTION
1.00pm	Quiet time with mindful meditation and story time
1.30pm	Free time
2.00pm	<b>Group activity:</b> Movie and popcorn!
3.00pm	Afternoon tea: fruit platter and pikelets
4.00pm	Outdoor investigative play
5.00pm	Reflection/suggestion time Quiet activities
6.00pm	Children depart



**MONDAY** 04/07/2022

# NAIDOC WEEK CELEBRATIONS

NAIDOC Week theme: GET UP! STAND UP! SHOW UP!

TIME	DESCRIPTION
7.00am	Children arrive: Indoor investigative play Quiet activities
8.00am	Team building and group games Sensory play
9.00am	Group discussion and news
9.30am	Group fitness
10.00am	Morning tea: fruit platter and rice cakes Playground activities
11.00am	All 'What is NAIDOC week' video

### Arts and Craft:

Pre-Kindy – Pre-Primary	Snake painting
Year 1 – Year 2	Boomerang painting
Year 3+	National NAIDOC poster competition!

**Cooking:** Apple and cinnamon damper

TIME	DESCRIPTION
12.30pm	Lunch time
1.00pm	Quiet time with mindful meditation and story time
1.30pm	Free time
2.00pm	Poster competition voting! Group chalk mural on the pavement
3.00pm	Afternoon tea: fruit platter and damper
4.00pm	Outdoor investigative play
5.00pm	Reflection/suggestion time Quiet activities
6.00pm	Children depart



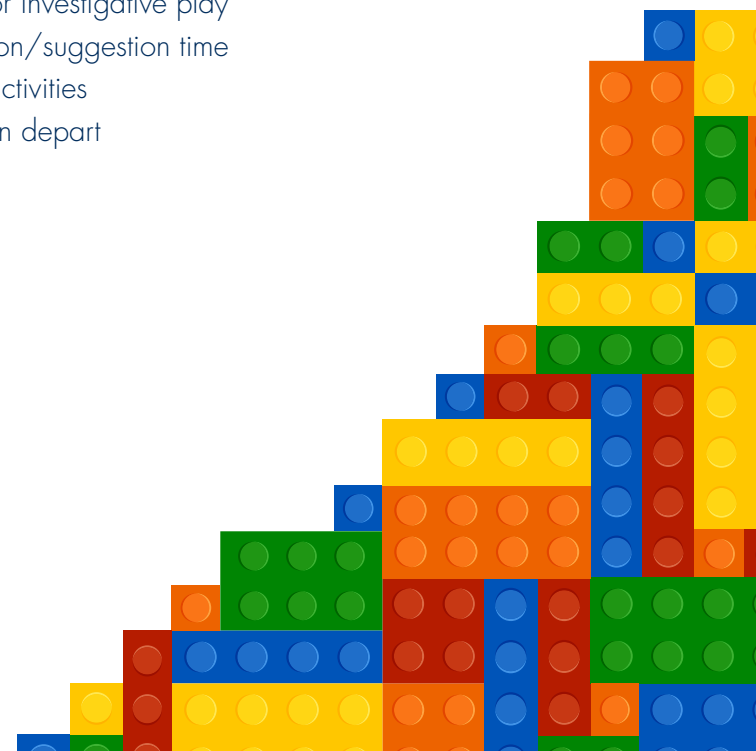


# TUESDAY 05/07/2022

## LEGO MASTERS

TIME	DESCRIPTION
7.00am	Children arrive: Indoor investigative play Quiet activities
8.00am	Team building and group games Sensory play
9.00am	Group discussion and news
9.30am	Group fitness
10.00am	Morning tea: fruit platter and biscuits Playground activities
11.00am	<b>Arts and Craft:</b> Team STEM building All Building Lego bridges and boats What teams' boat can float? How much weight can your bridge hold?
12.30pm	<b>Cooking:</b> Vegemite and cheese scrolls Lunch time

TIME	DESCRIPTION
1.00pm	Quiet time with mindful meditation and story time
1.30pm	Free time
2.00pm	<b>Group activities rotation:</b> <ul style="list-style-type: none"><li>Pin the head on the Lego man</li><li>Lego spoon race – who can get the most pieces in their team's box)</li><li>Lego head bean bag toss</li></ul> Afternoon tea: fruit platter and Vegemite & cheese scrolls Outdoor investigative play Reflection/suggestion time Quiet activities Children depart
3.00pm	
4.00pm	
5.00pm	
6.00pm	





# WEDNESDAY 06/07/2022

## FUTURE ME

Dress as your dream job

TIME	DESCRIPTION
7.00am	Children arrive: Indoor investigative play Quiet activities
8.00am	Team building and group games Sensory play
9.00am	Group discussion and news
9.30am	Group fitness
10.00am	Morning tea: fruit platter and cheese & crackers Playground activities
11.00am	<b>Arts and Craft:</b> Pre-Kindy – Pre-Primary Dream job lanyards Year 1 – Year 2 'When I grow up' fortune tellers Year 3+ Time capsules – dear future me...
12.30pm	<b>Cooking:</b> Raspberry and white chocolate muffins Lunch time

TIME	DESCRIPTION
1.00pm	Quiet time with mindful meditation and story time
1.30pm	Free time
2.00pm	<b>Group activities:</b> Clay creations <ul style="list-style-type: none"><li>• Make your dream house/world to live in</li></ul>
3.00pm	Afternoon tea: fruit platter and raspberry & white chocolate muffins
4.00pm	Outdoor investigative play
5.00pm	Reflection/suggestion time Quiet activities
6.00pm	Children depart

# THURSDAY 07/07/2022

## WORLD ENVIRONMENT DAY (ANIMAL FARM INCURSION)

TIME	DESCRIPTION	TIME	DESCRIPTION
7.00am	Children arrive: Indoor investigative play Quiet activities	12.30pm	Lunch time
8.00am	Team building and group games Sensory play	1.00pm	Quiet time with mindful meditation and story time
9.00am	Group discussion and news	1.30pm	Free time
9.30am	Group fitness	2.00pm	<b>Cuddly animal farm incursion</b> <ul style="list-style-type: none"><li>Pat, hold and feed farm animals!</li></ul>
10.00am	Morning tea: fruit platter and corn chips & salsa Playground activities	3.00pm	Afternoon tea: fruit platter and energy protein balls
11.00am	<b>All:</b> Group activities – recycled minute to win it! Can stacking – one minute to build the tallest stack without it knocking over Egg carton bottle toss Milk bottle bowling Recycle hopscotch	4.00pm	Outdoor investigative play
		5.00pm	Reflection/suggestion time
		6.00pm	Quiet activities Children depart
	<b>Cooking:</b> Energy protein balls		



# FRIDAY 08/07/2022

## DISCO FEVER FRIDAY!

TIME	DESCRIPTION
7.00am	Children arrive: Indoor investigative play Quiet activities
8.00am	Team building and group games Sensory play
9.00am	Group discussion and news
9.30am	Group fitness
10.00am	Morning tea: fruit platter and mini sandwiches Playground activities
11.00am	<b>Arts and Craft:</b> All                      DIY face masks – feathers, paint, glitter and more! DIY disco headbands or wrist bands
12.30pm	<b>Cooking:</b> Choc chip cookies Lunch time

TIME	DESCRIPTION
1.00pm	Quiet time with mindful meditation and story time
1.30pm	Free time
2.00pm	<b>Group activities:</b> Disco time – show off your masks and bands! <ul style="list-style-type: none"><li>• Limbo</li><li>• Musical statues</li><li>• Pass the parcel – prizes to win!</li></ul>
3.00pm	Afternoon tea: fruit platter and choc chip cookies
4.00pm	Outdoor investigative play
5.00pm	Reflection/suggestion time Quiet activities
6.00pm	Children depart



# MONDAY 11/07/2022

## FAMILY FEUD

TIME	DESCRIPTION
7.00am	Children arrive: Indoor investigative play Quiet activities
8.00am	Team building and group games Sensory play
9.00am	Group discussion and news
9.30am	Group fitness
10.00am	Morning tea: fruit platter and rice cakes Playground activities
11.00am	<b>Arts and Craft:</b> All      Team color crafts – blue, red, green, yellow - Headbands - Wristbands - Badges Decorate your teams table for the afternoon quiz!
12.30pm	<b>Cooking:</b> Banana bread Lunch time

TIME	DESCRIPTION
1.00pm	Quiet time with mindful meditation and story time
1.30pm	Free time
2.00pm	<b>Group activities:</b> OSHC family feud - get your buzzers ready! <ul style="list-style-type: none"><li>• Prizes to be won</li></ul>
3.00pm	Afternoon tea: fruit platter and banana bread
4.00pm	Outdoor investigative play
5.00pm	Reflection/suggestion time Quiet activities
6.00pm	Children depart



# TUESDAY 12/07/2022

## VIDEO GAME DAY (GAME VAULT INCURSION)

TIME	DESCRIPTION
7.00am	Children arrive: Indoor investigative play Quiet activities
8.00am	Team building and group games Sensory play
9.00am	Group discussion and news
9.30am	Group fitness
10.00am	Morning tea: fruit platter and biscuits Playground activities
11.00am	<b>Arts and Craft:</b> Pre-Kindy – Year 1      Make your own video game profile cards Year 2 – Year 6      Stress balls – Pokémon theme All      Kahoot quizzes
12.30pm	<b>Cooking:</b> Zucchini and corn fritters Lunch time

TIME	DESCRIPTION
1.00pm	Quiet time with mindful meditation and story time
1.30pm	Free time
2.00pm	<b>Group activities</b> <b>Game Vault incursion!</b>
3.00pm	Afternoon tea: fruit platter and zucchini & corn fritters
4.00pm	Outdoor investigative play
5.00pm	Reflection/suggestion time Quiet activities
6.00pm	Children depart



# WEDNESDAY 13/07/2022

## MISSION IMPOSSIBLE!

TIME	DESCRIPTION
7.00am	Children arrive: Indoor investigative play Quiet activities
8.00am	Team building and group games Sensory play
9.00am	Group discussion and news
9.30am	Group obstacle course!
10.00am	Morning tea: fruit platter and cheese & crackers Playground activities
11.00am	<b>Arts and Craft:</b> Pre-Kindy – Pre-Primary Create your own detective ID cards Year 1 – Year 2 Code crackers – solve the riddle Year 3+ Make a puzzle
12.30pm	<b>Cooking:</b> Savory muffins – spinach and cheese Lunch time

TIME	DESCRIPTION
1.00pm	Quiet time with mindful meditation and story time
1.30pm	Free time
2.00pm	<b>Group activity:</b> Solve the mystery! <ul style="list-style-type: none"><li>Crack the clues to save the day</li></ul> Afternoon tea: fruit platter and savory muffins
3.00pm	Outdoor investigative play
4.00pm	Reflection/suggestion time
5.00pm	Quiet activities
6.00pm	Children depart



# THURSDAY 14/07/2022

## CHRISTMAS IN JULY

TIME	DESCRIPTION
7.00am	Children arrive: Indoor investigative play Quiet activities
8.00am	Team building and group games Sensory play
9.00am	Group discussion and news
9.30am	Group fitness
10.00am	Morning tea: fruit platter and chips & salsa Playground activities
11.00am	<b>Arts and Craft:</b> Pre-Kindy – Pre-Primary Christmas ornament making Year 1 – Year 2 Christmas snow globes Year 3+ Make your own Christmas hat or face mask
12.30pm	<b>Cooking:</b> Christmas tree brownies Lunch time

TIME	DESCRIPTION
1.00pm	Quiet time with mindful meditation and story time
1.30pm	Free time
2.00pm	<b>Group activities</b> <ul style="list-style-type: none"><li>• Christmas parade – show off your hats and face masks!</li><li>• Christmas tree decorating comp!</li></ul> Afternoon tea: fruit platter and Christmas tree brownies
3.00pm	Outdoor investigative play
4.00pm	Reflection/suggestion time
5.00pm	Quiet activities
6.00pm	Children depart





# FRIDAY 15/07/2022

## COURAGEOUS CAMPERS

TIME	DESCRIPTION
7.00am	Children arrive: Indoor investigative play Quiet activities
8.00am	Team building and group games Sensory play
9.00am	Group discussion and news
9.30am	Group fitness
10.00am	Morning tea: fruit platter and mini sandwiches Playground activities
11.00am	<b>Arts and Craft:</b> All      STEM building – (sticks and marshmallow bridges) Using the resources left from an abandoned campfire, create a bridge so we can cross the stream!
12.30pm	<b>Cooking:</b> Rocky road Lunch time

TIME	DESCRIPTION
1.00pm	Quiet time with mindful meditation and story time
1.30pm	Free time
2.00pm	<b>Group activities:</b> Scavenger hunt – follow the map to find the lost treasure, be careful of obstacles!
3.00pm	Afternoon tea: fruit platter and rocky road
4.00pm	Outdoor investigative play
5.00pm	Reflection/suggestion time Quiet activities
6.00pm	Children depart



# MONDAY 18/07/2022

## FANTASTIC FOOD!

TIME	DESCRIPTION
7.00am	Children arrive: Indoor investigative play Quiet activities
8.00am	Team building and group games Sensory play
9.00am	Group discussion and news
9.30am	Group fitness
10.00am	Morning tea: fruit platter and rice cakes Playground activities
11.00am	<b>Arts and Craft:</b> Pre-Kindy – Pre-Primary Edible cookie dough Year 1 – Year 2 Edible slime Year 3+ Pizza dough making
12.30pm	<b>Cooking:</b> Lamingtons Lunch time

TIME	DESCRIPTION
1.00pm	Quiet time with mindful meditation and story time
1.30pm	Free time
2.00pm	<b>Group activities:</b> <ul style="list-style-type: none"><li>• Doughnut on a string competition – no hands!</li><li>• Guess the food – use your senses!</li></ul> Afternoon tea: fruit platter and lamingtons
3.00pm	Outdoor investigative play
4.00pm	Reflection/suggestion time
5.00pm	Quiet activities
6.00pm	Children depart



# TUESDAY 19/07/2022

## MINDFULNESS RETREAT

TIME	DESCRIPTION
7.00am	Children arrive: Indoor investigative play Quiet activities
8.00am	Team building and group games Sensory play
9.00am	Group discussion and news
9.30am	Group fitness
10.00am	Morning tea: fruit platter and biscuits Playground activities
11.00am	<b>Arts and Craft:</b> Pre-Kindy – Pre-Primary Make cloud dough – sensory delight Year 1 – Year 2 Create your own mindful journal Year 3+ Make your own bath bomb
12.30pm	<b>Cooking:</b> Mini spinach and cheese sausage rolls Lunch time

TIME	DESCRIPTION
1.00pm	Quiet time with mindful meditation and story time
1.30pm	Free time
2.00pm	<b>Group activities:</b> <ul style="list-style-type: none"><li>• Group yoga – stretching our minds and bodies</li><li>• Kahoot quizzes</li></ul> Afternoon tea: fruit platter and mini spinach & cheese sausage rolls
3.00pm	Outdoor investigative play
4.00pm	Reflection/suggestion time
5.00pm	Quiet activities
6.00pm	Children depart

